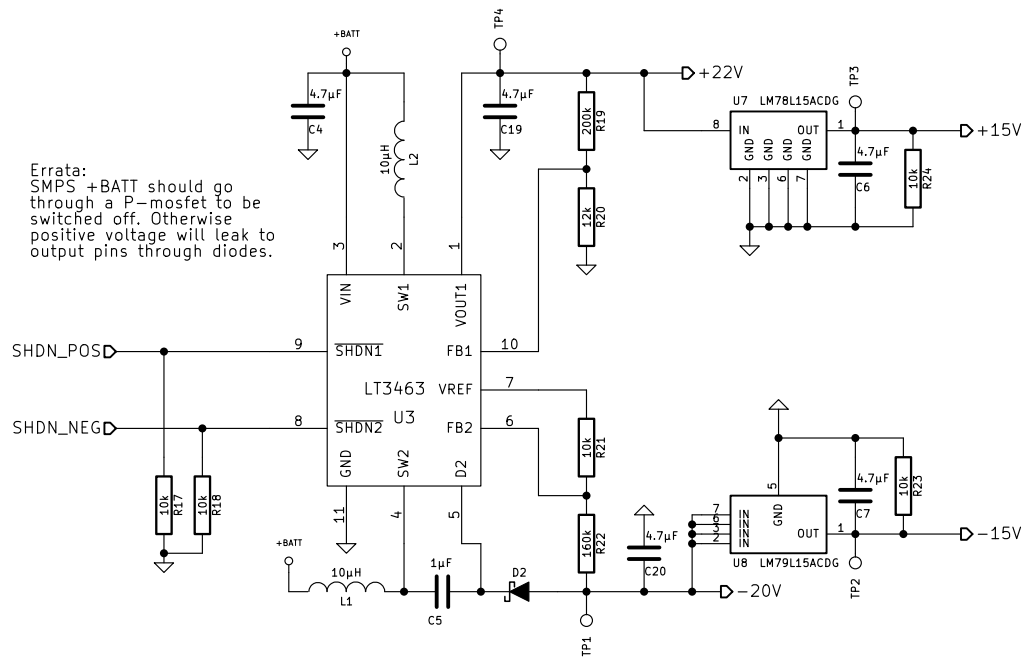
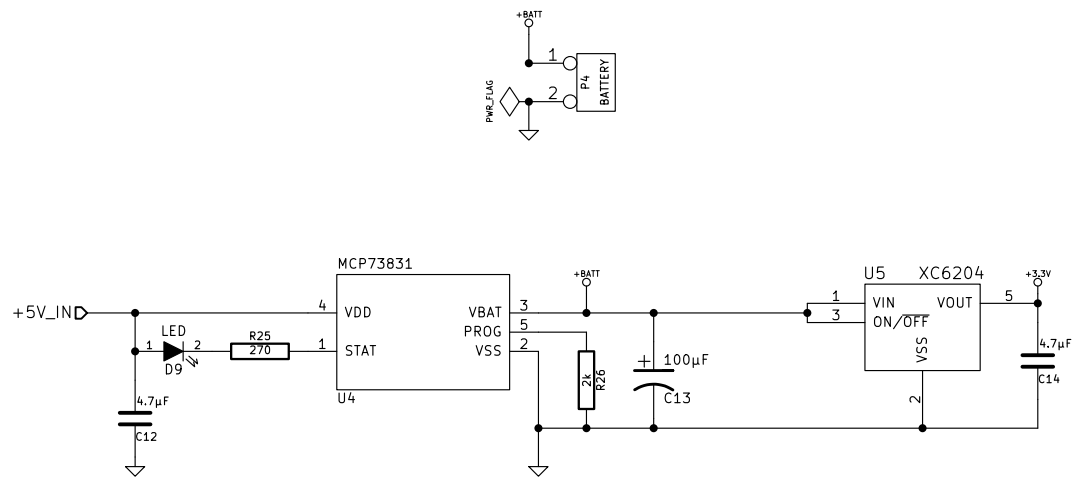


jpa	
File: uunimittari_rx.sch	
Sheet: /	
Title: CPU & Display	
Size: A4	Date: 14 may 2013
KiCad E.D.A.	Rev: 1
Id: 1/3	



Errata:
 SMPS +BATT should go
 through a P-mosfet to be
 switched off. Otherwise
 positive voltage will leak to
 output pins through diodes.

jpa		
File: eink_power.sch		
Sheet: /E Ink Power Supply/		
Title:		
Size: A4	Date: 14 may 2013	Rev: 1
KiCad E.D.A.		Id: 2/3



File: power_and_charge.sch		
Sheet: /Power and charge/		
Title:		
Size: A4	Date: 14 may 2013	Rev:
KiCad E.D.A.		Id: 3/3